



THE EVOLUTION OF INTELLIGENT DESIGN®



## 2019 PRODUCT COLLECTION

**NEW!**  
See pages:  
24, 25, 26, 27, 39,  
46, 54, 67, 69

A Cornerstone Foodservice Company

# Table of Contents

<b>Induction Ranges</b> .....	<b>3</b>
Countertop.....	6
Reconfigurable .....	8
Built-In .....	11
Custom Case .....	12
<b>Induction &amp; Frost Top Tables</b> .....	<b>13</b>
SmartStone™ .....	18
Quick Ship Table .....	19
Frost Tops.....	20
Mobile Action Carts.....	21
<b>Warming &amp; Cooling Systems</b> .....	<b>23</b>
Heat Lamps.....	24
Warming Trays, Carving Stations.....	26
Integra .....	27
Solstice .....	28
Heating Elements.....	29
<b>Buffet Systems</b> .....	<b>30</b>
Round Sauteuse Servers .....	31
Square Servers .....	35
Soup Servers.....	37
Mini Servers .....	39
Reflection Servers.....	40
Chafing Dishes.....	43
Hotel Pans .....	44
Servella.....	46
<b>Induction Cookware &amp; Accessories</b> ....	<b>47</b>
Blackline.....	48
IRONLite .....	49
Endurance .....	50
Vulcano .....	51
Motif .....	53
Primo.....	55
Accessories.....	58
<b>Beverage &amp; Table Display</b> .....	<b>61</b>
Beverage Dispensers .....	62
Beverage Servers .....	64
Micro Xcessories .....	69



# INDUCTION RANGES

Power, Efficiency, ***Precision***

88

Cook  
 Temp

Cook  
Temp

Low

High

## Why Spring USA Induction?

- ✓ **One-year overnight exchange warranty** on all Spring USA ranges in the Continental United States
- ✓ **Less than 1% failure rating**
- ✓ **Smart Scan® Technology** safety features adjusts electrical output for pan size and construction, adjusts instantly to voltage fluctuations and automatically shuts off after 2 minutes of non-use
- ✓ **Glass top is 25% thicker than competition.** 5mm tempered glass is reinforced for durability. Dials are heavy duty knurled knobs
- ✓ **Easy to use and maintain.** Includes easy to read LED controls. Self-leveling, slip-proof legs that prevent scratched surfaces

### WHY INDUCTION?



**Faster** - Rapid heat delivery with quicker recovery than gas or electric.



**Cost Effective** - 90% less expensive than canned fuel! Save on air conditioning bill, too.



**Precise** - Even heating, no hot spots. Adjusts automatically as food is added or subtracted.



**Safer** - No open flame or hot coils; surface cool to the touch when pan is removed.



**More Efficient** - 50% more efficient than gas; heats pans directly without losing energy into the air.



**Cooler** - Low radiant heat keeps room cool. Heat stops when pan is removed.



**Cleaner** - Sealed glass surface wipes easy. No stocking, spilling or disposing of canned fuel.

## UNLIMITED INDUCTION™

- ✓ Edge-to-Edge technology can read one or more vessels regardless of where they are placed
- ✓ Power receptacle in back of unit
- ✓ Daisy chain up to 5 units in one 15-amp circuit
- ✓ Removable controls allow for use on countertop or built-in

PATENT PENDING

### Hold Only 300 Watt Range SM-300CR

Countertop or Built-in

300 W | 110-120 V | 2.5 amps | 60 Hz

4 Settings | 145-185°F/62-85°C

NEMA 5-15P

10.0 lbs

14.0"W x 14.0"D x 3.6"H

FCC, ETL, ETL-Sanitation to NSF-4,

CETL, UL 197

7 ft. cord

Minimum vessel size 4.7"/12cm



OUTLET IN BACK



## DAISY CHAIN 5 UNITS

# INDUCTION RANGES

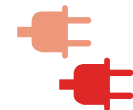
## Countertop

### **MAX INDUCTION**<sup>®</sup>

Ranges offer front-of-house warming and cooking with back-of-house power and durability.

#### **Hold Only 650 Watt Range SM-651C-T**

Countertop  
650 W | 110-120 V | 5.4 amps | 60 Hz  
4 Settings | 145-185°F/62-85°C  
NEMA 5-15P  
9.8 lbs  
12.5"W x 16.0"D x 3.1"H  
FCC, ETL, ETL-Sanitation to NSF-4,  
CETL, UL 197  
7 ft. cord



**PLUG-IN 2 IN  
ONE 15-AMP CIRCUIT**

#### **Cook & Hold 1800 Watt Range SM-181C**

Countertop  
1800 W | 110-120 V | 15 amps | 60 Hz  
20 Settings | 110-400°F/43-204°C  
NEMA 5-15P  
11.8 lbs  
12.5"W x 16.0"D x 3.1"H  
FCC, ETL, ETL-Sanitation to NSF-4,  
CETL, UL 197  
7 ft. cord



#### **Cook & Hold 1800 Watt Range SM-181C-T**


Countertop  
1800 W | 110-120 V | 15 amps | 60 Hz  
20 Settings | 110-400°F/43-204°C  
NEMA 5-15P  
11.8 lbs  
12.5"W x 16.0"D x 3.1"H  
FCC, ETL, ETL-Sanitation to NSF-4,  
CETL, UL 197  
7 ft. cord



### Cook & Hold 2600 Watt Range SM-261C

Countertop  
2600 W | 208-240 V | 10.8 amps | 60 Hz  
20 Settings | 110-400°F/43-204°C  
NEMA 6-20P  
11.8 lbs  
12.9"W x 16.5"D x 4.0"H  
FCC, ETL, ETL-Sanitation to NSF-4,  
CETL, UL 197  
7 ft. cord




**SM-263C**   
2600 W | 220-240 V | 10.8 amp | 50-60 Hz  
CEE 7/7 Schuko Plug

**SM-263CU UK**  
2600 W | 220-240 V | 10.8 amps | 50-60 Hz  
BS 1363 (13A) U.K. Plug

### Cook & Hold 3500 Watt Range SM-351C

Countertop  
3500 W | 208-240 V | 14.6 amps | 60 Hz  
20 Settings | 110-400°F/43-204°C  
NEMA 6-20P  
18.0 lbs  
15.0"W x 20.2"D x 5.8"H  
FCC, ETL, ETL-Sanitation to NSF-4,  
CETL, UL 197  
7 ft. cord



**SM-353C**   
3500 W | 220-240 V | 14.6 amps | 50-60 Hz  
CEE 7/7 Schuko Plug

**SM-353CU UK**  
3000 W | 220-240 V | 12.5 amp | 50-60 Hz  
BS 1363 (13A) U.K. Plug



# INDUCTION RANGES

## Cook & Hold 3500 Watt Range SM-351C-FT

Countertop  
3500 W | 208-240 V | 14.6 amps | 60 Hz  
4 Time Settings | 110-400°F/43-204°C  
NEMA 6-20P  
18.0 lbs  
15.0"W x 20.2"D x 5.8"H  
FCC, ETL, ETL-Sanitation to NSF-4,  
CETL, UL 197  
30, 45, 70 or 80 sec countdown timer  
7 ft. cord



SM-353C-FT 

3500 W | 220-240 V  
14.6 amps | 50-60 Hz  
CEE 7/7 16 A Schuko Plug

SM-353C-FTU **UK**

3000 W | 220-240 V  
12.5 amps | 50-60 Hz  
BS 1363 (13A) U.K. Plug

## Reconfigurable

PATENTED

**MAX INDUCTION**<sup>®</sup>

Patented, removable control panel design gives flexibility  
for ranges to be built in or used on a countertop.

## Cook & Hold 3500 Watt Wok Range w/Concave Top SM-351WCR

Countertop or Built-in  
3500 W | 208-240 V | 14.6 amps | 60 Hz  
20 Settings | 110-400°F/43-204°C  
NEMA 6-20P  
17.6 lbs  
14.6"W x 19.1"D x 5.7"H  
FCC, ETL, ETL-Sanitation to NSF-4, CETL, UL 197  
7 ft. cord



**REMOVABLE CONTROLS  
FOR COUNTERTOP OR  
BUILT-IN APPLICATION!**

SM-353WCR 

3500 W | 220-240 V  
4.6 amps | 50-60 Hz  
CEE 7/7 Schuko Plug

SM-353WCRU **UK**

3000 W | 220-240 V  
12.5 amps | 50-60 Hz  
BS 1363 (13A) U.K. Plug





**Cook & Hold 3500 Watt Wok Range  
w/Concave Top  
SM-351WCR-8  
Includes 8217-60/32 Vulcano Wok Pan**

Countertop or Built-in  
3500 W | 208-240 V | 14.6 amps | 60 Hz  
20 Settings | 110-400°F/43-204°C  
NEMA 6-20P  
17.6 lbs  
14.6"W x 19.1"D x 5.7"H  
FCC, ETL, ETL-Sanitation to NSF-4,  
CETL, UL 197  
7 ft. cord

**SM-353WCR-8**

3500 W | 220-240 V | 14.6 amps | 50-60 Hz  
CEE 7/7 16 A Schuko Plug

**SM-353WCRU-8 UK**

3000 W | 220-240 V | 12.5 amps | 50-60 Hz  
BS 1363 (13A) U.K. Plug



**REMOVABLE CONTROLS  
FOR COUNTERTOP OR  
BUILT-IN APPLICATION!**



**REMOVABLE CONTROLS  
FOR COUNTERTOP OR  
BUILT-IN APPLICATION!**

**Cook & Hold 3500 Watt Wok Range  
w/Concave Top  
SM-351WCR-6  
Includes 8216-60/34 Primo Wok Pan**

Countertop or Built-in  
3500 W | 208-240 V | 14.6 amps | 60 Hz  
20 Temp Settings | 110-400°F/43-204°C  
NEMA 6-20P  
17.6 lbs  
14.6"W x 19.1"D x 5.7"H  
FCC, ETL, ETL-Sanitation to NSF-4, CETL, UL 197  
7 ft. cord

**SM-353WCR-6**

3500 W | 220-240 V  
14.6 amps | 50-60 Hz  
CEE 7/7 16 A Schuko Plug

**SM-353WCRU-6 UK**

3000 W | 220-240 V  
12.5 amps | 50-60 Hz  
BS 1363 (13A) U.K. Plug




# INDUCTION RANGES

## Cook & Hold 2500 x 2 Watt Double Range SM-251-2CR

Countertop or Built-in  
2500x2 W | 208-240 V | 10.4 x 2 amps | 60 Hz  
20 Settings | 110-400°F/43-204°C  
NEMA 6-30P  
29.1 lbs  
28.0"W x 18.1"D x 4.6"H  
FCC, ETL, ETL-Sanitation to NSF-4,  
CETL, UL 197  
7 ft. cord



SM-253-2CR   
2500x2 W | 220-240 V | 20.8 x 2 amps | 50-60 Hz  
Plug & receptacle to be supplied by the  
customer, based on country code



**REMOVABLE CONTROLS  
ALLOW FOR 2 COUNTERTOP  
CONFIGURATIONS OR BUILT-IN  
APPLICATION!**



## Storage tote SBR-175

Fits 2 Countertop Induction Ranges (does not fit wok or double range)  
23.8"W x 19.5"D x 12.0"H  
8.4 lbs



# Built-In **MAX INDUCTION**<sup>®</sup>

Ranges flush mount with countertop for a seamless display.  
 Hold-only range can be hidden under SmartStone<sup>®</sup>-  
 more information on page 18.

## Hold Only 650 Watt Range **SM-651R**

Built-in  
 650 W | 110-120 V | 5.4 amps | 60 Hz  
 4 Settings | 145-185°F/62-85°C  
 NEMA 5-15P | 10.6 lbs  
 12.6"W x 13.4"D x 3.3"H  
 FCC, ETL, ETL-Sanitation to NSF-4, CETL, UL 197



## Hidden Hold Only 650 Watt Range **SM-651SS**



**SM-653R**  
 650 W | 220-240 V | 2.7 amps | 50-60 Hz  
 CEE 7/7 16 A Schuko Plug

### **SM-653RU UK**

650 W | 220-240 V | 2.7 amps | 50-60 Hz  
 BS 1363 (13A) U.K. Plug

## Cook & Hold 1800 Watt Range **SM-181R**

Built-in  
 1800 W | 110-120 V | 15 amps | 60 Hz  
 20 Settings | 110-400°F/43-204°C  
 NEMA 5-15P | 10.8 lbs  
 12.6"W x 13.4"D x 3.3"H  
 FCC, ETL, ETL-Sanitation to NSF-4, CETL, UL 197



## Cook & Hold 2600 Watt Range **SM-261R**

Built-in  
 2600 W | 208-240 V | 10.8 amps | 60 Hz  
 20 Settings | 110-400°F/43-204°C  
 NEMA 6-20P | 11.7 lbs  
 12.6"W x 13.4"D x 3.3"H  
 FCC, ETL, ETL-Sanitation to NSF-4, CETL, UL 197



**SM-263R**  
 2600 W | 220-240 V | 10.8 amps | 50-60 Hz  
 CEE 7/7 16 A Schuko Plug

### **SM- 263RU UK**

2600 W | 220-240 V | 10.8 amps | 50-60 Hz  
 BS 1363 (13A) U.K. Plug

# INDUCTION RANGES

## Custom Induction Range Cases

Complement your décor with custom housing for Spring USA warming or cooking ranges. Choose an item number below, then select finishes from pages 18-19. Protective storage cases available.



### Single Range Custom Cases

#### Hidden Hold Only 650 Watt Range w/Custom Case SRC-651SS

650 W | 110-120 V | 5.4 amps | 60 Hz  
4 Settings | 145-185°F/62-85°C  
NEMA 5-15P  
14.125"W x 20.125"D x 6.0"H  
FCC, ETL, ETL-Sanitation to NSF-4, CETL, UL 197  
7 ft. cord

#### Cook & Hold 1800 Watt Range w/Custom Case SRC-181SS

1800 W | 110-120 V | 15 amps | 60 Hz  
20 Settings | 110-400°F/43-204°C  
NEMA 5-15P  
14.125"W x 20.125"D x 6.0"H  
FCC, ETL, ETL-Sanitation to NSF-4, CETL, UL 197  
7 ft. cord

#### Cook & Hold 2600 Watt Range w/Custom Case SRC-261SS

2600 W | 208-240 V | 10.8 amps | 60 Hz  
20 Settings | 110-400°F/43-204°C  
NEMA 6-20P  
14.125"W x 20.125"D x 6.0"H  
FCC, ETL, ETL-Sanitation to NSF-4, CETL, UL 197  
7 ft. cord

### Double Range Custom Cases

#### Two Hidden Hold Only 650 Watt Double Ranges w/Custom Case SRC-2-651SS

650x2 W | 110-120 V | 5.4 x 2 amps | 60 Hz  
4 Settings | 145-185°F/62-85°C  
NEMA 5-15P  
33.5"W x 20.125"D x 6.0"H  
FCC, ETL, ETL-Sanitation to NSF-4, CETL, UL 197  
7 ft. cord

#### Two Cook & Hold 1800 Watt Double Ranges w/Custom Case SRC-2-181SS

1800x2 W | 110-120 V | 15 x 2 amps | 60 Hz  
20 Settings | 110-400°F/43-204°C  
NEMA 5-15P  
33.5"W x 20.125"D x 6.0"H  
FCC, ETL, ETL-Sanitation to NSF-4, CETL, UL 197  
7 ft. cord

#### Two Cook & Hold 2600 Watt Double Ranges w/ Custom Case SRC-2-261SS

2600x2 W | 208-240 V | 10.8 x 2 amps | 60 Hz  
20 Settings | 110-400°F/43-204°C  
NEMA 6-20P  
33.5"W x 20.125"D x 6.0"H  
FCC, ETL, ETL-Sanitation to NSF-4, CETL, UL 197  
7 ft. cord

# INDUCTION & FROST TOP TABLES

INDUCTION &  
FROST TOP TABLES

Flexible,  
Functional,  
***Beautiful***



# INDUCTION & FROST TOP TABLES

INDUCTION &  
FROST TOP TABLES

## A custom table designed for you!

Work with our experts to create a table built to meet your needs. We will walk you through the process, discussing your design, power, space and budget requirements. In the end, you will have a piece of furniture that is both functional & beautiful!

Our experts will guide you through the process:

1

### Dimensions

Specify the size required for your space

2

### Type

Do you need a mobile table, stationary or built in?

3

### Style

Select one of our styles or a custom design



4

### Equipment

Add hidden or exposed induction ranges, frost tops, or both!

5

### Finishes

Identify wood stain, SmartStone™ colors, edge styles, etc.!

6

### Get a Quote!

After a consultation, our team will provide you a quote

# Designed & built in the USA

Turnkey installations available



**Element**



**Communal**



**Nesting**



**Moser**

Includes Hidden Casters



**Naper**



**Waterfall**



**Credenza**

Includes Hidden Casters



**Heritage**



## Additional table features offered:

- Hidden, piano hinge control panel
- Heavy-duty, hidden casters
- Discreet cord management
- Protective padded vinyl covers



**Farmhouse**



**Curved Leg**



**Continental**

Includes Hidden Casters



**Redford**

Includes Hidden Casters



**Beau**



**Classic**

Includes Hidden Casters



**Hermosa**



**Contemporary**

Includes Hidden Casters

# INDUCTION & FROST TOP TABLES

## The SmartStone™ System

SmartStone™ is specially designed to perform with Spring USA drop-in or hidden Induction Ranges and Frost Tops

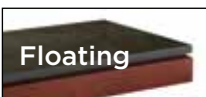
- ✓ Trivetless system; no extra pieces to stock or lose
- ✓ Non-porous & NSF approved, it's easy to clean & maintain
- ✓ Durable for a commercial environment
- ✓ Repurpose table after serving food with hidden Induction Ranges and Frost Top options

## SmartStone™ Colors:

*Request a sample for a true representation of color*



**Table Edge Styles:**



**Wood stain and laminates for table base:**

*Request a sample for a true representation of color*

Laminate				
Stain				
			<p>We can also match a custom stain</p>	

**Quick Ship Table**

**Ships in 2 business days!**

- ✓ Includes 3 Hidden 650 Watt Induction Ranges. Controls accessible in back
- ✓ Finishes: Snow SmartStone®, Dark Walnut wood edge and brushed metal legs with casters



**Quick Ship Table QS7230**  
72.0"W x 30.0"D x 37.5"H  
250 lbs.

# INDUCTION & FROST TOP TABLES

## Hidden or Exposed Frost Tops

### Chill items without the mess of ice

- ✓ Request a remote compressor to minimize noise
- ✓ Works with a variety of stone or porcelain materials
- ✓ Custom sizes available
- ✓ Surface temperature of hidden: 0 to 30°F (-18 to -1°C) Exposed: 0 to 20°F (-18 to -7°C)



### Hidden Frost Tops

**SS-FT-2422**

24.0"W x 22.0"D  
115 V | 3 amps

**SS-FT-3622**

36.0"W x 22.0"D  
115 V | 10.3 amps

**SS-FT-4822**

48.0"W x 22.0"D  
115 V | 14 amps

**SS-FT-6022**

60.0"W x 22.0"D  
115 V | 14.8 amps

**SS-FT-7222**

72.0"W x 22.0"D  
208 V | 7.2 amps

### Exposed Frost Tops

**RT-FT-2026**

19.5"W x 25.25"D  
120 V | 3.5 amps

**RT-FT-2040**

19.5"W x 39"D  
120 V | 6.2 amps

**RT-FT-2053**

19.5"W x 53.13"D  
120 V | 6.4 amps

**RT-FT-2066**

19.5"W x 66.5"D  
120 V | 6.4 amps

**RT-FT-2080**

19.5"W x 80.25"D  
120 V | 7 amps

### Down Draft Air Filtration System for Exposed Cooking Ranges See page 11

- ✓ Captures 96.7% of grease-laden vapor, odor and particulates caused from cooking
- ✓ 3-part filtration system runs quiet
- ✓ UL 197 Certified and UL-Sanitation to ANSI/NSF No.2



**AF-350**

350 W | 110-120 V | 2.9 amps | 60 Hz  
NEMA 5-15P

**AF9876**

Trim Piece

**AF9879**

Galvanized Baffle  
Pre Filter

**AF98710**

High Efficiency  
Primary Cell Filter

**AF98711**

Carbon Absorption  
Final Filter

**AF-350-3** 

350 W | 220-240 V | 1.5 amps | 50-60 Hz  
CEE 7/7 Schuko Plug OR BS 1363 (13A) U.K. Plug

# Mobile Action Carts

- ✓ Order our tables or customize components and finishes
- ✓ Select cooking and/or warming ranges
- ✓ Choose table base: wood with SmartStone® or stainless steel with vinyl wrap
- ✓ Protective, vinyl table covers available



## Mobile Culinary Station Includes:

- (1) AF-350 Down Draft Air Filtration System
- (2) Flush Mounted Induction Cooking Ranges
- (1) PM-2251 Power Management System
- (2) Refrigerated Drawers
- Stainless Steel Work Top
- Jet black body wrap
- Front locking casters
- Stainless steel body with black vinyl wrap
- Dimensions: 71.4"W x 34.8"D x 43.9"H

### MCS1800

1800 Watt x2  
Induction Ranges

### MCS3572

2600 Watt x2  
Induction Ranges

### Custom MCS

Specify  
components  
and ranges



## Mobile Induction Kiosk

custom order only

### Component Option Examples for Induction Kiosk and Culinary Station:

- Casters
- Refrigerators
- Refrigerated Drawers
- Drawers
- Shelves
- Cabinets
- Sneeze Guards
- Stainless Steel Cold Pans
- Insulated Ice Bins
- Ice Pan
- Mechanically Cooled Pan
- Speed rails
- Glass rack slides
- Task lights/ LED Lights
- Air Filtration
- Demo mirror

# INDUCTION & FROST TOP TABLES

## Mobile Cooking Stations

- ✓ Heavy duty stainless steel work station
- ✓ UL 197 Certified
- ✓ Choose mobile or built-in
- ✓ Optional laminate color for cabinet doors on mobile units
- ✓ Optional drop down leaf and/or handle
- ✓ Power management included

### Cabinet Door Laminate Options:



### Built-In

**ICB234-18**  
Built-In (2) 1800  
Watt Ranges,  
(1) Down Draft Air  
Filter System

**ICB234-26**  
Built-In (2) 2600  
Watt Ranges,  
(1) Down Draft Air  
Filter System

**ICB348-18**  
Built-In (3) 1800  
Watt Ranges,  
(2) Down Draft Air  
Filter System

**ICB348-26**  
Built-In (3) 2600  
Watt Ranges,  
(2) Down Draft Air  
Filter System

### SP-7387

Optional doors for built-in units



### Mobile

**ICS234-18**  
Mobile (2) 1800  
Watt Ranges,  
(1) Down Draft Air  
Filter System

**ICS348-18**  
Mobile (3) 1800  
Watt Ranges,  
(2) Down Draft Air  
Filter System

**ICS234-26**  
Mobile (2) 2600  
Watt Ranges,  
(1) Down Draft Air  
Filter System

**ICS348-26**  
Mobile (3) 2600  
Watt Ranges,  
(2) Down Draft Air  
Filter System

# WARMING & COOLING SYSTEMS

WARMING &  
COOLING SYSTEMS

***Low power  
solutions;***  
high end quality



# WARMING & COOLING SYSTEMS

## Heat Lamps

Weighted base sits neatly behind a carving board or warming tray.

### Adjustable Arm

- ✓ 18/8 stainless steel
- ✓ Bulbs sold separately
- ✓ Outlet in stem

#### Single Polished 2791-6E

250 W | 110-120 V | 2.1 amps | 60 Hz

NEMA 5-15P

12.0 lbs

10.5"W x 7.1"D base, (15.1"D from back of base to farthest edge of shade) x 24.9"H (with shade parallel to base)

ETL. UL

Daisy chain 6 units on a 15-amp circuit

5.5 ft. cord



#### 2791-6E-220

250 W | 220-240 V | 1.0 amps | 50-60 Hz

CEE-7/7 16A Schuko Plug

(BS 1363 (13A) U.K. Plug also available)

Daisy chain 12 units on a 15-amp circuit



#### Double Adjustable Neck 2792-6E

500 W | 110-120 V | 4.2 amps | 60 Hz

NEMA 5-15P

16.4 lbs

10.5"W x 7.1"D base, (15.1"D from back of base to farthest edge of shade)

x 24.9"H (with shade parallel to base)

ETL. UL

Daisy chain 3 units on a 15-amp circuit

5.5 ft. cord



#### 2792-5-220

250 W | 220-240 V | 1.0 amps | 50-60 Hz

CEE-7/7 16A Schuko Plug

(BS 1363 (13A) U.K. Plug also available)

DAISY CHAIN 6 UNITS ON A 15 AMP CIRCUIT

## NEW!

#### Single Titanium 2791-6EB

250 W | 110-120 V | 2.1 amps | 60 Hz

NEMA 5-15P

12.0 lbs

10.5"W x 7.1"D base, (15.1"D from back of base to farthest edge of shade) x 24.9"H

(with shade parallel to base)

ETL. UL

Daisy chain 6 units on a 15-amp circuit

5.5 ft. cord



## NEW!

#### Double Titanium 2792-6EB

500 W | 110-120 V | 4.2 amps | 60 Hz

NEMA 5-15P

16.4 lbs

10.5"W x 7.1"D base, (15.1"D from back of base to farthest edge of shade) x 24.9"H (with shade parallel to base)

ETL. UL

Daisy chain 3 units on a 15-amp circuit



FINGERPRINT RESISTANT



## Pivot Head

- ✓ Premium 18/10 brushed stainless steel
- ✓ Solid positioning, pivoting head design

### Single 2791-5

250 W | 110-120 V | 2.1 amps | 60 Hz  
NEMA 5-15P  
14.6 lbs  
8.0"W x 10.5"D base, (16.7"D  
from back of base to  
farthest edge of shade)  
x 25.6"H (with shade parallel  
to base)  
ETL. UL | 5.5 ft. cord



2791-5-220   
250 W | 220-240 V | 1.0 amps | 50-60 Hz  
CEE-7/7 16A Schuko Plug  
(BS 1363 (13A) U.K. Plug also available)

### Double 2792-5

500 W | 110-120 V | 4.2 amps  
60 Hz  
NEMA 5-15P  
22.8 lbs  
8.0"W x 10.5"D base, (15.7"D  
from back of base to farthest edge  
of shade) x 25.6"H (with shade  
parallel to base)  
ETL. UL | 5.5 ft. cord



2792-5-220   
500 W | 220-240 V | 2.1 amps | 50-60 Hz  
CEE-7/7 16A Schuko Plug  
(BS 1363 (13A) U.K. Plug also available)

## Adjustable Height, Pivot Head

- ✓ Knurled knob smoothly, but firmly adjusts height 22-26"
- ✓ Outlet in base

## NEW!

Special Order

### Copper 2791-6C

250 W | 110-120 V | 2.1 amps | 60 Hz  
NEMA 5-15P  
14.6 lbs  
8.0"W x 17.0"D x 22- 26.0"H  
ETL. UL | 5.5 ft. cord



DAISY CHAIN 6 UNITS  
ON A 15 AMP CIRCUIT

## NEW!

Special Order

### Onyx 2791-6B

250 W | 110-120 V | 2.1 amps | 60 Hz  
NEMA 5-15P  
14.6 lbs  
8.0"W x 17.0"D x 22- 26.0"H  
ETL. UL | 5.5 ft. cord



DAISY CHAIN 6 UNITS  
ON A 15 AMP CIRCUIT

# WARMING & COOLING SYSTEMS

## Warming Trays Carving Stations

- ✓ Economical buffet solution
- ✓ Low profile pairs well with lamps
- ✓ Only 1.91 amps
- ✓ Plug 6 trays into one 15-amp circuit
- ✓ Tempered glass top is easy to clean



**Stealth Warming Tray  
ST-1220-T**

230 W | 110-120 V | 1.9 amps | 60 Hz  
80-200°F / 27-93°C  
NEMA 5-15P | 11.4 lbs  
23.8"W x 13.0"D x 2.0"H  
ETL. UL | 5.5 ft. cord



**Warming Tray  
ST-1220**

24.2"W x 13.8"D x 1.9"H

ST-1223   
230 W | 220-240 V  
1.0 amps  
50-60 Hz  
CEE 7/7 Schuko Plug

## NEW!

### Riser for Warming Trays

Stainless Steel Riser for ST-1220: STS-1220  
Stainless Steel Riser for ST-1220-T: STS-1220-SS  
Titanium Riser for ST-1220: STS-1220-ST  
Titanium Riser for ST-1220-T: STS-1220-T



- ✓ Mirror-polished 18/10 stainless steel base
- ✓ Removable granite carving board for easy cleaning
- ✓ Choose from heated and non-heated carving board options



**Heated Mocha Carving Board  
2794-6M**

450 W | 110-120 V | 3.8 amps | 60 Hz  
150-160°F / 66-71°C  
NEMA 5-15P | 37.6 lbs  
24.5"W x 18.3"D x 2.9"H  
ETL. UL | 8 ft. cord

**Carving Station  
w/Unheated Mocha Board  
2793-5M**

500 W | 110-120 V  
4.2 amps | 60 Hz  
NEMA 5-15P | 58.2 lbs  
Lamp (8.0"W x 10.5"D base,  
15.7"D (from back of base to  
farthest edge of shade) x 25.6" H  
(with shade parallel to base)+ board  
(24.5"W x 18.3"D x 2.9"H)  
ETL. UL | 5.5 ft. cord



**Carving Station  
with unheated  
onyx board  
2793-5O**

Mocha Board Unheated   
2793-5-220  
500 W | 220-240 V | 2.1 amps | 50-60 Hz  
CEE 7/7 Schuko Plug,  
(BS 1363 (13A) U.K. Plug also available)

# NEW! Integra

## Dual Heat Warming System

- ✓ Overhead ceramic heat light with warming tray
- ✓ Power receptacle in back; Daisy chain 3 units on a 20-amp circuit
- ✓ LED lighted canopy highlights food
- ✓ Add an optional etched logo or design to canopy
- ✓ Ships assembled and ready to use
- ✓ 1-year warranty on parts & labor



### Integra Dual Warming System ISS-600

600 W | 120 V | 5 amps | 60 Hz

105-250°F / 41-121 °C

NEMA 5-15P

20.6 lbs.

26.8"W x 13.5"D x 18.75"H

ETL certified to UL 197 and CSA C22.2 #109

Daisy chain 3 units on a 20-amp circuit

5.5 ft. cord

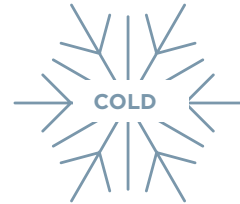


# WARMING & COOLING SYSTEMS

## Solstice

### Cooling & Warming System

- ✓ Temperatures range from 23-50°F and 120-185°F
- ✓ Goes from warm to cold in 45 minutes
- ✓ Only 1.91 amps
- ✓ Does not use water or freon
- ✓ Non-stick titanium coated body is fingerprint and scratch resistant
- ✓ Includes one full size 8-quart insert pan



EASY VIEW WINDOW

PATENTED

#### Solstice HC380-CT

230 W | 110-120 V | 1.0 amps | 60 Hz

23-50°F/-5-10°C &

120-185°F/49-85°C

NEMA 5-15P

61.8 lbs

24.0"W x 18.9"D x 11.4"H

With open cover: 27.0"H

ETL. UL

#### HC383-CT

230 W | 220-240 V | 1.9 amps | 50-60 Hz

CEE-7/7 Schuko Plug, (BS 1363 (13A) U.K.

Plug also available)

**Solstice non-stick coated inserts are made from die-cast aluminum for maximum temperature distribution**

#### Solstice Full Size Insert 580-8/11

20.9"W x 13.0"D x 2.6"H

#### Solstice Divided Insert 580-8/12

20.9"W x 13.0"D x 2.6"H



# Electrical Heating Elements

- ✓ Integrated safety thermostat prevents overheating
- ✓ Choose self-regulating or adjustable controls options
- ✓ One-year warranty

## Coffee Urn & Soup Station

Holds coffee at perfect temperature without burning

### 9503

170 W | 110-120 V | 1.4 amps | 50-60 Hz  
 185°F/85°C  
 PVC cable  
 UL, CE  
 8 ft. cord w/NEMA 5-15P Plug



## Rectangle or Full-Size Chafers & Servers

### 9517

450 W | 110-120 V  
 3.8 amps | 50-60 Hz  
 410°F/210°C  
 PVC cable  
 UL, CE  
 8 ft. cord w/NEMA 5-15P Plug



## Round Chafer & Servers

### 9520

240 W | 110-120 V  
 2.0 amps | 50-60 Hz  
 210°F/99°C  
 PVC cable  
 UL, CE  
 8 ft. cord w/NEMA 5-15P Plug

### 9509

600 W | 110-120 V | 5.0 amps | 50-60 Hz  
 410°F/210°C  
 PVC cable  
 UL, CE | 8 ft. cord w/NEMA 5-15P Plug

### 9524

500 W | 110-120 V  
 4.2 amps | 50-60 Hz  
 410°F/210°C  
 PVC cable  
 UL, CE  
 8 ft. cord and NEMA 5-15P Plug



### 9508

600 W 220-240 V | 5.8 amps | 50-60 Hz  
 410°F/210°C  
 PVC cable  
 UL, CE  
 8 ft. cord | w/Schuko Plug

### 9506/1

700 W | 110-120 V  
 5.8 amps | 50-60 Hz  
 410°F/210°C  
 PVC cable  
 UL, CE | 8 ft. cord with energy regulator  
 and NEMA 5-15P Plug



### 9524/1

500 W | 110-120 V  
 4.2 amps | 50-60 Hz  
 410°F/210°C  
 PVC cable  
 UL, CE  
 8 ft. cord with energy regulator  
 and NEMA 5-15P Plug



### 9505/1

800 W | 220-240 V | 3.3 amps | 50-60 Hz  
 240°F/99°C  
 PVC cable  
 UL, VDE | 8 ft. cord with energy regulator and Schuko Plug

## BUFFET SYSTEMS

Easy,  
Adaptable,  
***Beautiful***



# Round Sauteuse Induction Servers

- ✓ Axles glide smoothly and hold cover open at any angle. Tested to perform over 20K cycles
- ✓ 18/10 stainless steel
- ✓ Water pan has an easy to read fill line to avoid overflow
- ✓ Special design prevents induction conductivity issues caused by warping
- ✓ Stabilizing arm with rubber foot keeps servers from sliding on countertops—purchase the extender arm for use with countertop induction ranges
- ✓ 10 year warranty for manufacturer defects on welds & metal casting
- ✓ Colored servers are fingerprint and scratch resistant

## Vision

1.25-4 qt./ 1.2-3.8 L  
 15.4"W x 18.7"D x 6.3"H  
 With open cover: 22.0"H

**Chrome Accents**  
 2472-6/36

**Gold Accents**  
 2472-697/36



EASY VIEW WINDOW

## Stainless Steel

1.25-4 qt./ 1.2-3.8 L  
 15.4"W x 18.7"D x 6.3"H  
 With open cover: 22.0"H

**Chrome Accents**  
 2372-6/36

**Gold Accents**  
 2372-697/36A



# BUFFET SYSTEMS



**Titanium**  
1.25-4 qt./ 1.2-3.8 L  
15.4"W x 18.7"D x 6.3"H  
With open cover: 22.0"H

**Chrome Accents**  
2382-8/36



**Bronze**  
1.25-4 qt./ 1.2-3.8 L  
15.4"W x 18.7"D x 6.3"H  
With open cover: 22.0"H

**Chrome Accents**  
2382-567/36

**Gold Accents**  
2382-597/36  
**Black Pearl Accents**  
2382-587/36



**Merlot**  
1.25-4 qt./ 1.2-3.8 L  
15.4"W x 18.7"D x 6.3"H  
With open cover: 22.0"H

**Chrome Accents**  
2382-367/36



Special Order

**Sapphire**  
1.25-4 qt./ 1.2-3.8 L  
15.4"W x 18.7"D x 6.3"H  
With open cover: 22.0"H

**Chrome Accents**  
2382-467/36

**Gold Accents**  
2382-497/36  
**Black Pearl Accents**  
2382-487/36



Adds 6" to server

## Sauteuse Server Stands

**Stainless Steel**  
E372-6

**Titanium**  
E382-8

**Bronze**  
E382-597

**Sapphire**  
E382-4

**Merlot**  
E382-3

- ✓ Includes server & stand
- ✓ Use with canned fuel or heating elements found on page 29



## Server/Stand Combo

**3372-6/36**  
1.25-4 qt./ 1.2-3.8 L  
15.4"W x 18.7"D x 11.3"H  
With open cover: 28"H



## Round Sauteuse Server Inserts

- ✓ Most inserts in the industry
- ✓ Oven and dishwasher safe
- ✓ Most have a channel system to redirect condensation to the water pan instead of the food
- ✓ White coated inserts offer the look of porcelain with the lightweight durability of stainless steel. Non-stick, high temp polymer coating is stain and scratch resistant

### Stainless Steel 372-66/36

4.0 qt./ 3.8 L  
14.125" Dia. x 2.25"H



### Channeled Bottom Stainless Steel 372-66/36D

4.0 qt./ 3.8 L  
14.125" Dia. x 2.25"H



### Half Pan Stainless Steel 372-66/36/12

2 qt./ 1.9 L  
14.13"W x 7.06"D x 2.5"H



### Half Pan Channeled Bottom Stainless Steel 372-36/12D

2 qt./ 1.9 L  
14.13"W x 7.06"D x 2.5"H



**CHANNELS GREASE AWAY  
FROM PROTEIN**

### Divided Porcelain 9557-59/36/12

2 qt./ 1.9 L  
14.125" Dia. x 2.25"H



### Porcelain 9552-59/36

1.3 qt./ 1.2 L  
14.125" Dia. x 2.5"H



### Porcelain 9554-59/36

2.5 qt./ 2.4 L  
14.125" Dia. x 1.5"H



### White Stainless Steel 372-62/3

4.0 qt./ 3.8 L  
14.125" Dia. X 2.25"H



### Half Pan White Stainless Steel 372-62/36/12

2 qt./ 1.9L  
14.13"W x 7.06"D + 2.5"H



# BUFFET SYSTEMS

## Condiment Holder, Stainless Steel Insert 372-37

3.75 qt./ 3.55 L  
14.125" Dia.  
x 2.25"H



## Additional Pans 372-37\*3

1.25 qt./ 1.8 L each



## CBS Bumper Replacements E237

## Extendable Support Arm for Servers 372-601



## Storage Tote SBS-175

Fits 1 Sautouse Server  
23.75"W x 19.5"D x 12"H



## Dim Sum Insert Set DB172-36/37

Includes stainless steel adapter, bamboo basket & cover

12.0" Dia. x 10.0" H Adds 9" to server

## Additional Basket & Cover DA172

12.0" Dia. x 4.0" H



## Sautouse Replacement Axels AA-644

## Sautouse Replacement Axels for Vision Servers AG-644



# Square Induction Servers

- ✓ Axles glide smoothly and hold cover open at any angle. Tested to perform over 20K cycles
- ✓ All inserts are oven and dishwasher safe
- ✓ 18/10 stainless steel
- ✓ Water pan has an easy to read fill line to avoid overflow
- ✓ Special design prevents induction conductivity issues caused by warping
- ✓ Stabilizing arm with rubber foot keeps servers from sliding on countertops—purchase the extender arm for use with countertop induction ranges
- ✓ 10 year warranty for manufacturer defects on welds & metal casting
- ✓ Colored servers are fingerprint and scratch resistant



EASY VIEW WINDOW

**Stainless Steel**  
4-9.4 qt./ 3.8-8.9 L  
15.4"W x 19.0"D x 7.0"H  
With open cover: 23.5"H

**Chrome Accents**  
**2374-6**  
**Gold Accents**  
**2374-697**

**Vision**  
4-9.4 qt./ 3.8-8.9 L  
15.4"W x 19.0"D x 7.0"H  
With open cover: 23.5"H

**Chrome Accents**  
**2474-6**



**Titanium**  
4-9.4 qt./ 3.8-8.9 L  
15.4"W x 19.0"D x 7.0"H  
With open cover: 23.5"H

**Chrome Accents**  
**2384-8**

**Gold Accents**  
**2384-897**  
**Black Pearl Accents**  
**2384-88**



**Bronze**  
4-9.4 qt./ 3.8-8.9 L  
15.4"W x 19.0"D x 7.0"H  
With open cover: 23.5"H

**Chrome Accents**  
**2384-567**

**Gold Accents**  
**2384-597**  
**Black Pearl Accents**  
**2384-587**

# BUFFET SYSTEMS



Special Order

**Sapphire**  
4-9.4 qt./ 3.8-8.9 L  
15.4"W x 19.0"D x 7.0"H  
With open cover: 23.5"H

**Chrome Accents**  
**2384-467**



**Merlot**  
4-9.4 qt./ 3.8-8.9 L  
15.4"W x 19.0"D x 7.0"H  
With open cover: 23.5"H

**Chrome Accents**  
**2384-367**

**Gold Accents**  
**2384-497**

**Black Pearl Accents**  
**2384-487**

**Gold Accents**  
**2384-397**

**Black Pearl Accents**  
**2384-387**



Adds 6" to server

## Square Server Stands

<b>Stainless Steel</b> E374-6	<b>Bronze</b> E374-597	<b>Sapphire</b> E374-4
<b>Titanium</b> E374-8	<b>Merlot</b> E374-3	

- ✓ Includes server & stand
- ✓ Use with canned fuel or heating elements found on page 29

## Server/Stand Combo 3374-6

4-9.4 qt./ 3.8-8.9 L  
15.4"W x 19.0"D x 11.3"H  
With open cover: 28"H



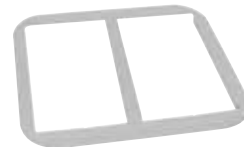
## Square Server Insert 374-66/23

6 qt./ 5.7 L  
15.4"W x 15.6"D x 3.4"H  
Channel system redirects condensation to water pan instead of food



## Adapter for 2/3 sized hotel pans 374-651/23

See 2/3 Sized Hotel Pan Inserts on Page 45



## Adapter for 2- 1/3 sized hotel pans 374-519/23

See 1/3 Sized Hotel Pan Inserts on Page 45



**Square Replacement Axels**  
**AA-648**

**Square Replacement Axels for Vision servers**  
**AG-648**

**CBS Bumper Replacements**  
**E237**



**Extendable Support Arm for Servers**  
**372-601**

# Oatmeal/Soup Service

- ✓ Features patented hinged cover
- ✓ 18/10 stainless steel
- ✓ Use with Spring USA Induction Ranges or pair with stands for use with fuel
- ✓ Colored servers are fingerprint and scratch resistant
- ✓ Use with tureen ladle on page 65
- ✓ Includes cover, tureen, water pan, and ring
- ✓ Perfect for oatmeal or soup
- ✓ 10 year warranty for manufacturer defects on welds & metal casting



## Stainless Steel

6 qt./ 5.7 L  
13.8" Dia. x 9.3"H  
With open cover: 15.0"H

**Chrome Accents**  
2375-6/6H

**Gold Accents**  
2375-697/6H



## Titanium

6 qt./ 5.7 L  
13.8" Dia. x 9.3"H  
With open cover: 15.0"H

**Chrome Accents**  
2385-8/6

**Gold Accents**  
2385-897/6

**Black Pearl Accents**  
2385-88/6



## Bronze

6 qt./ 5.7 L  
13.8" Dia. x 9.3"H  
With open cover: 15.0"H

**Chrome Accents**  
2385-567/6

**Gold Accents**    **Black Pearl Accents**  
2385-597/6    2385-587/6



Special Order

**Sapphire**  
2385-467/6  
**Chrome Accents**

6 qt./ 5.7 L  
13.8" Dia. x 9.3"H  
With open cover: 15.0"H



**Merlot**  
2385-367/6  
**Chrome Accents**

6 qt./ 5.7 L  
13.8" Dia. x 9.3"H  
With open cover: 15.0"H



Adds 7.2" to server

## Soup Station Stand

**Stainless Steel**  
E375-6/6

**Titanium**  
E375-8/6

**Bronze**  
E375-597/6

**Merlot**  
E375-397/6

**Sapphire**  
E375-497/6



# BUFFET SYSTEMS

- ✓ Includes tureen, cover, ring, stand
- ✓ Use with canned fuel or heating element found on page 29

## Server/Stand Combo 3375-6/6

6 qt./ 5.7 L  
13.6"W x 11.9"D x 16.5"H  
With open cover: 20.0"H



**BENT HANDLE  
LADLE SOLD  
SEPARATELY ON  
PAGE 65**

PATENTED



**Hinged  
Cover for  
Soup Tureen-  
Stainless Steel  
444-61/24H**



**Ring for Soup  
Station -  
Stainless Steel  
375-651/6  
11.9" Dia.**



**Soup Tureen  
375-60/6  
6 qt./ 5.7 L  
13.6"W x 10.0"D x 7.5"H**



**Sauce/Syrup  
Server with Ladle  
2565-6  
1.58 qt. / 1.5 L  
7.9"W x 7.3"D x 9.8"H**



## Notched Tureen Covers



Item#	Cover Color	Accent Color	Item#	Cover Color	Accent Color
375-61/6	Stainless Steel	Chrome	375-61/6BB	Bronze	Black Pearl
375-697/6	Stainless Steel	Gold	375-61/6SC	Sapphire	Chrome
375-61/6TC	Titanium	Chrome	375-61/6SG	Sapphire	Gold
375-61/6TG	Titanium	Gold	375-61/6SB	Sapphire	Black Pearl
375-61/6TB	Titanium	Black Pearl	375-61/6MC	Merlot	Chrome
375-61/6BC	Bronze	Chrome	375-61/6MG	Merlot	Gold
375-61/6BG	Bronze	Gold	375-61/6MB	Merlot	Black Pearl

# Mini Servers NEW!



**EASY VIEW WINDOW**

Perfect for condiments, sauces, dips and more!

- ✓ Use with induction or fit multiples on a warming tray
- ✓ 18/10 mirror polished stainless steel
- ✓ Water pan has an easy to read fill line to avoid overflow
- ✓ Axles glide smoothly and hold cover open at any angle
- ✓ Special design prevents induction conductivity issues caused by warping
- ✓ Stabilizing arm with rubber foot keeps servers from sliding on countertops—purchase the extender arm for use with countertop induction ranges or warming trays
- ✓ 10 year warranty for manufacturer defects on welds & metal casting

**Mini Vision Round**  
**2472-6/28**

1.9 qt. / 1.8 L  
10.5"W x 13.0"D x 5.75"H



**Mini Vision Rectangle**  
**2474-6/13**

1.7 qt. / 1.6 L  
8.5"W x 12.0"D x 5.75"H



**Stand**  
**E372-28**

1.9 qt. / 1.8 L  
Adds 4.5" to server



**Stand**  
**E372-13**

Adds 4.5" to server



**Insert**  
**372-66/28**

1.9 qt. / 1.8 L  
11.0" Dia. x 2.25"H



**Insert**  
**374-66/13**

1.7 qt. / 1.6 L  
8.8"W x 10.8"D x 2.2"H



**Channeled Insert**  
**372-66/28D**

1.9 qt. / 1.8 L  
11.0" Dia. x 2.25"H



**2 Cavity Insert**  
**374-519/12**

2 x 0.6 qt. / 0.6 L  
8.8"W x 10.8"D x 2.5"H



# BUFFET SYSTEMS

## Reflection Induction Servers

- ✓ Use with Spring USA Induction Ranges or pair with stands for use with canned fuel or electric heating elements on page 42
- ✓ Stabilizing arm with rubber foot keeps servers from sliding on countertops -purchase the extender arm for use with counterop induction units
- ✓ All-angle axle system glides smoothly and allows covers to hold open at virtually any angle
- ✓ Self-closing axles available upon request
- ✓ **All servers come with one insert pan**
- ✓ 18/8 stainless steel
- ✓ Economical buffet solution
- ✓ 10 year warranty for manufacturer defects on welds & metal casting

### Titanium 6 qt. Round Reflection 2172-8/37

6 qt./ 5.7 L  
16.7"W x 20.5"D x 7.9"H  
With open cover: 24.5"H



### Rose Gold 6 qt. Round Reflection 2172-5/37

6 qt./ 5.7 L  
16.7"W x 20.5"D x 7.9"H  
With open cover: 24.5"H



### Stainless Steel 6 qt. Round Reflection 2172-6/37

6 qt./ 5.7 L  
16.7"W x 20.5"D x 7.9"H  
With open cover: 24.5"H



**EASY VIEW WINDOW**



## 6 qt. Round Reflection Stand and Inserts

- ✓ Oven and dishwasher safe
- ✓ White Coated Inserts offer the look of porcelain with the lightweight durability of stainless steel. Non-stick, high temp polymer coating is stain and scratch resistant

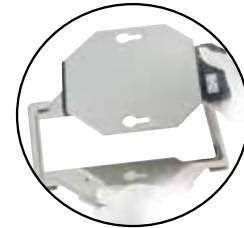


**Stand for 6 qt. Round Reflection Server**  
**172-6/37**

Adds 4.6" to server



**Heating Element Adapter for Stand**  
**EA172**



*Add electric heating element- see page 29*



**Stainless Steel Insert**  
**572-66**

6 qt./ 5.7 L  
15.25" Dia. x 2.5"H



**Stainless Steel Divided Insert**  
**572-66/12**

6 qt./ 5.7 L  
15.25" Dia. x 2.5"H



**Stainless Steel Condiment Insert**  
**372-37**

3.75qt./ 3.55L  
14.125" Dia. x 2.25"H



**White Stainless Steel Insert**  
**572-62**

6 qt./ 5.7 L  
15.25" Dia. x 2.5"H



**Dim Sum Insert Set**  
**DA172-36/37**

Includes stainless steel adapter, bamboo basket & cover  
12.0" Dia. x 10.0"H  
Adds 10" to server

**Additional Basket & Cover**  
**DA172**

12.0" Dia. x 4.0"H



**Additional pans**  
**372-37\*3**

1.25 qt./1.18 L each



**White Stainless Steel Divided Insert**  
**572-62/12**

6 qt./ 5.7 L  
15.25" Dia. x 2.5"H

**RECOMMEND USING NYLON UTENSILS WITH WHITE COATED INSERTS- SEE PAGE 64**

# BUFFET SYSTEMS

## Reflection Servers Continued

### 4.5 qt. Reflection Round Buffet Server 2172-6/30

4.5 qt./ 4.3 L  
15.0"W x 18.8"D x 7.9"H  
With open cover: 22.5"H



EASY VIEW WINDOW

### Stand for 4.5 qt. Reflection Round 172-6/30

Adds 4.1" to server



### 4.5 qt. Round Insert-Stainless Steel 572-66/30

4.5 qt./ 4.3 L  
11.9" Dia. x 1.8"H



### 4.5 qt. Round Insert-Porcelain 9544/1

4.5 qt./ 4.3 L  
11.9" Dia. x 1.8"H



### 4.5 qt. Round Insert-Porcelain Divided 9544/2

4.5 qt./ 4.3 L  
11.9" Dia. x 1.8"H

### 9.4 qt. Square Buffet Server 2174-6

5-9.4 qt./ 4.7-8.9 L  
15.9"W x 18.3"D x 7.5"H  
With open cover: 22.5"H

Accepts 1/3 and 2/3 sized Hotel Pan Inserts on Page 45



### Square Buffet Server Stand 174-6/23

Adds 4.5" to server



### 6.9 qt. Square Buffet Server 2173-6/12

2-6.9 qt./ 1.9-6.5 L  
16.75"W x 15"D x 7.5"H  
With open cover: 19.5"H

Accepts 1/2 sized Hotel Pan Inserts on Page 44



### Small Square Buffet Server Stand 173-6/12

Adds 4.0" to server



### Full Size Buffet Server 2171-6

8.4-14.8 qt./ 7.9-14.0 L  
23.1"W x 18.6"D x 7.8"H  
With open cover: 22.5"H

Accepts hotel pans pages 44-45



### Full Size Buffet Server Stand 171-6/11

Adds 4.7" to server



### Heating Element Adapters for a Full or 9.4 qt. Square Stand EA171/174

Add electric heating element- see page 29



### All Angle Replacement Axels K102

### Self Closing Replacement Axels K101

### CBS Bumper Replacements E237

### Extendable Support Arm for Servers 372-601



# Rondo Chafing Dishes

- ✓ Mirror-polished 18/10 stainless steel\*
- ✓ Water channel system redirects condensation to the water pan instead of the food
- ✓ All-angle axle system glides smoothly and allows covers to hold open at virtually any angle
- ✓ Use with canned fuel (stands only) or electric heating elements found on page 29
- ✓ Chafers come with one insert and canned fuel holder
- ✓ 10 year warranty for manufacturer defects on welds & metal casting



**Classic Full Size Chafer**  
**K2509-6**

8.4-14.8 qt./ 7.9-14.0 L  
26.0"W x 18.9"D x 15.8"H  
*See inserts next page*  
*\*18/8 Stainless Steel*

**K2509-6A**

Includes Heating Element 9517-  
*See details page 29*



**Full Size Chafer**  
**2509-6A**

8.4-14.8 qt./ 7.9-14.0 L  
26.0"W x 18.9"D x 9.0"H  
*See inserts next page*



**Built-in Full Size Chafer**  
**2546-6A**

8.4-14.8 qt./ 7.9-14.0 L  
26.0"W x 18.9"D x 15.3"H  
Includes Heating Element  
9506/1- *See details page 29*



**Gold Accents**  
**2546-697A**

**Round Rondo Chafer Inserts**



**Stainless Steel**  
**510-66/35**  
8 qt./ 7.6 L

**Stainless Steel**  
**510-66/35/12**  
3 qt./ 2.8 L

**Porcelain**  
**9546/1**  
6 qt./ 5.7 L

**Porcelain Divided**  
**9546/2**  
6 qt./ 5.7 L



**Round Chafer**  
**2510-6/35**

3-8 qt./ 2.8-7.6 L  
13.75" Dia. x 18.4"H



**Built-in Round Chafer**  
**2547-6/35**

3-8 qt./ 2.8-7.6 L  
13.75" Dia. x 8.9"H  
Includes Heating Element 9524/1  
*See details page 29*



**Gold Accents**  
**2547-697/35**

# BUFFET SYSTEMS

## Hotel Pans

- ✓ Oven safe
- ✓ Dishwasher safe
- ✓ Choose from stainless steel or porcelain
- ✓ White Coated Inserts offer the look of porcelain with the lightweight durability of stainless steel.

### Full-Size

#### Stainless Steel 521-66/11

14.8 qt./ 14 L  
20.9"W x 12.9"D x 4.0"H



#### Porcelain 9541

8.4 qt./ 7.9 L  
20.9"W x 12.9"D x 2.4"H



#### Stainless Steel 522-66/11

9.9 qt./ 9.4 L  
20.9"W x 12.9"D x 2.5"H



#### White Stainless Steel 522-62/11

9.9 qt./ 9.4 L  
20.9"W x 12.9"D x 2.5"H



**RECOMMEND USING NYLON  
UTENSILS WITH ALL WHITE  
COATED INSERTS- SEE PAGE 65**

### Half Size

#### Stainless Steel 521-66/12

6.9 qt./ 6.5 L  
12.9"W x 10.5"D x 4.0"H



#### Porcelain 9542

3.3 qt./ 3.1 L  
12.625"W x 10.375"D  
x 2.375"H



#### Stainless Steel 522-66/12

4.3 qt./ 4.1 L  
12.9"W x 10.5"D x 2.5"H



#### White Stainless Steel 522-62/12

4.3 qt./ 4.1 L  
12.9"W x 10.5"D x 2.5"H



**RECOMMEND USING NYLON  
UTENSILS WITH ALL WHITE  
COATED INSERTS- SEE PAGE 65**

**Two-Third Size**

**Stainless Steel  
521-66/23**

9.4 qt./ 8.9 L  
13.9"W x 12.8"D x 4.0"H



**Porcelain  
9543/2**

5 qt./ 4.7 L  
13.9"W x 12.8"D x 2.4"H



**Stainless Steel  
522-66/23**

5.8 qt./ 5.5 L  
13.9"W x 12.8"D x 2.5"H



**White Stainless  
Steel  
522-62/23**

5.8 qt./ 5.5 L  
12.9"W x 12.8"D x 2.5"H



**RECOMMEND USING NYLON  
UTENSILS WITH ALL WHITE  
COATED INSERTS- SEE PAGE 65**

**One-Third Size**

**Stainless Steel  
521-66/13**

4.3 qt./ 4.1 L  
12.9"W x 7.0"D x 4.0"H



**Porcelain  
9543/1**

2 qt./ 1.9 L  
12.625"W x 6.25"D x 2.375"H



**Stainless Steel  
522-66/13**

2.7 qt./ 2.6 L  
12.9"W x 7.0"D x 2.5"H



**White Stainless  
Steel  
522-62/13**

4.5 qt./ 4.3 L  
12.9"W x 7.0"D x 2.5"H



**RECOMMEND USING NYLON  
UTENSILS WITH ALL WHITE  
COATED INSERTS- SEE PAGE 65**



# BUFFET SYSTEMS

**NEW!**  
servella

## Professional Servingware

- ✓ Comes with one removable insert
- ✓ Works with induction and fuel
- ✓ Easy-read water fill line inside vessel



### Round

4 qt. / 3.8 L | 10.2" Dia. x 4.7" h



Aged Copper  
2272-5/27



Additional Insert  
272-66/27

### Square

4 qt. / 3.8 L | 11.4"W x 11.4"D x 4.7"H



Aged Copper  
2274-5/23



Additional Insert  
274-66/23

### Rectangle

4 qt. / 3.8 L | 15.2"W x 8.5"D x 3.3"H



Aged Copper  
2271-5



Additional Insert  
271-66/11



INDUCTION COOKWARE  
& ACCESSORIES

Back of house durable,  
***front of house beautiful***

INDUCTION COOKWARE  
& ACCESSORIES

“ When you buy quality, you buy only once. Spring USA cookware can last a lifetime! Spring USA offers great quality at reasonable prices. ”

Randy Zweiban | Executive Chef | Chicago

## Induction Ready Cookware

**BLACKLINE**

**ENDURANCE**

**VULCANO**

**Spring USA<sup>®</sup>**  
*MOTIF*

**PRIMO!**

**IRON*Lite***

**Spring USA is the pioneer** of induction-ready cookware in the United States. Loved by Chefs worldwide for performance and reliability, our cookware is front-of-house beautiful and back-of-house durable.

**BLACKLINE**

Induction | Gas | Electric | Oven



Performs like cast-iron, but is stronger and lighter

- ✓ Perfect for searing and sautéing
- ✓ Solid carbon steel construction with weld-mounted cast handle
- ✓ Designed to withstand the most intense heat; safe for oven or broiler
- ✓ Will never develop hot spots and bottom will never warp
- ✓ Lifetime warranty

**8481-40/20**

8.63" Dia. x 1.75"H

**8481-40/24**

10.25" Dia. x 2.0"H

**8481-40/28**

11.38" Dia. x 2.25"H

**8481-40/32**

13.13" Dia. x 3.38"H





# IRON<sup>Lite</sup> **NEW!**

The look of cast iron without the weight or maintenance

**NO seasoning | NO chipping | NO cracking**

Induction | Gas | Electric | Oven



- ✓ Dishwasher safe
- ✓ Non-stick interior, exterior
- ✓ Self-braising cover
- ✓ Use with Cover/Utensil Holder on page 64
- ✓ Use with nylon tools on page 65
- ✓ 1-yr warranty: coating & handles

**2.7 qt.**  
**Black Only**  
**8656-8/28**  
 11" Dia. X 2.4"H  
 2.7 qt. / 2.6 L  
 4.6 lbs.



**7.2 qt.**  
 11" Dia. x 4.7"H  
 7.2 qt. / 6.8 L  
 4.7 lbs.



**Black 8658-8/28**

**Red 8658-5/28**

**Gray 8658-9/28**



# INDUCTION COOKWARE & ACCESSORIES

## ENDURANCE

Induction | Gas | Electric | Oven



Commercial aluminum cookware designed for induction cooking

- ✓ **Dishwasher and oven safe**
- ✓ 3-ply cast aluminum pan
- ✓ Scratch resistant, QuanTanium reinforced non-stick coating won't chip or flake; Made without PTFE/PFOA
- ✓ Stay cool handle is stainless steel with coated rivets
- ✓ Withstands temperatures up to 500°
- ✓ One-year warranty on non-stick coating, 10-year warranty on handle and rivets

Suggest nylon tools to protect non-stick surface, see page 65

### Fry Pan 8451-30/20

7.875" Dia. x 1.25"H

### Fry Pan 8451-30/24

9.5" Dia. x 1.75"H

### Fry Pan 8451-30/28

11" Dia. x 1.75"H

### Flat bottom Wok Pan 8452-30/28

11" Dia. x 3.0"H



### Round Induction Serving Tray 8360-30/42

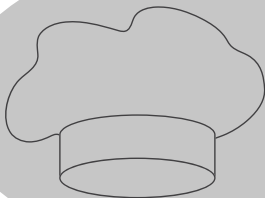
16.5" Dia. (21.25"W with handles)



*When you're 'in the weeds', every second is critical.*

*Faulty equipment is not an option! Spring USA cookware has delivered superior performance, time and time, again!*

*It is only natural to rely on the best, Spring USA!*



Francois Sanchez | Executive Chef | Geneva, IL

## VULCANO<sup>®</sup>

Induction | Gas | Electric | Oven



First and finest induction-ready, non-stick cookware

- ✓ Scratch resistant, QuanTanium reinforced non-stick coating won't chip or flake; Made without PTFE/PFOA
- ✓ Stay cool handle is stainless steel with coated rivets
- ✓ Withstands temperatures up to 500°, oven safe
- ✓ One-year warranty on non-stick coating, 10-year warranty on handle and rivets

### 5-ply construction with "Spring USA Edge"

- ✓ 18/10 stainless steel outer layers prevent warping and scratching
- ✓ 3-ply aluminum core provides quick and even heat distribution
- ✓ Rolled sealed edges protect the core and make it safe for commercial dishwasher



**Fry Pan**  
**8478-60/16**

6" Dia. x 1.0"H

**Fry Pan**  
**8478-60/20A**

7.875" Dia. x 1.25"H

**Fry Pan**  
**8478-60/24A**

9.5" Dia. x 1.5"H

**Fry Pan**  
**8478-60/28A**

11" Dia. x 1.5"H

**Fry Pan**  
**8478-60/32**

12.625" Dia. x 1.88"H



# INDUCTION COOKWARE & ACCESSORIES

## Round bottom Wok Pan 8217-60/32

4.0 qt./ 3.8 L  
12.625" Dia. x 3.0"H  
*use with wok range on page 8*



## Flat bottom Wok Pan 8218-60/30A

4.0 qt./ 3.8 L  
12.0" Dia. x 2.75"H



## Flat bottom Wok Pan w/short & long handle 8218-60/35

4.0 qt./ 3.8 L  
13.75" Dia. x 3.0"H



Suggest nylon  
tools to protect  
non-stick surface,  
see page 65

## Flat bottom Wok Pan w/short handles 8214-60/35

5.3 qt./5.0 L  
13.75" Dia. x 3.0"H



*I use Spring USA pans for not only their durability,  
but for their superb heat conductivity. This makes them  
exceptional for induction cooking at Everest, which is  
located 40 floors up in the Chicago Stock Exchange.*



Jean Joho | Executive Chef/Owner | Chicago, IL



Induction | Gas | Electric | Oven | Frost Tops



Lightweight Motif has the look of cast iron or enamel without the weight or maintenance.

- ✓ **Dishwasher and oven safe**
- ✓ Stainless steel core with cast aluminum body for quick and even heat distribution
- ✓ Durable, QuanTanium reinforced non-stick coating won't rust, crack, chip or flake; Made without PTFE/PFOA
- ✓ Tempered glass, vented covers are reinforced with brushed stainless steel rim
- ✓ Withstands temperatures up to 500°
- ✓ One-year warranty on non-stick coating

### Small Round Casserole Pan w/Cover

2.25 qt./ 2.13 L  
12.38"W x 9.25"D x 4.75"H

**White**                      **Bronze**                      **Titanium**  
**8258-2/24**                **8258-7/24**                **8258-8/24**

Replacement Cover  
356-21/24M



### Medium Round Casserole Pan w/Cover

3.0 qt./ 2.8 L  
13.5"W x 10.5"D x 4.75"H

**White**                      **Bronze**                      **Titanium**  
**8258-2/27**                **8258-7/27**                **8258-8/27**

Replacement Cover  
356-21/27M



### Large Round Casserole Pan w/Cover

3.75 qt./ 3.5 L  
14.75"W x 11.75"D x 4.75"H

**White**                      **Bronze**                      **Titanium**  
**8258-2/30**                **8258-7/30**                **8258-8/30**

Replacement Cover  
356-21/30M



# INDUCTION COOKWARE & ACCESSORIES

## Divided Casserole Pan w/Cover

3.75 qt./ 3.5 L  
14.75"W x 11.75"D x 4.75"H

**White**  
8258-2/30/2

**Bronze**  
8258-7/30/2

**Titanium**  
8258-8/30/2

Replacement Cover  
356-21/30M



## Square Casserole Pan w/Cover

4.0 qt./ 3.8 L  
13.75"W x 10.5"D x 5.75"H

**White**  
8268-2/28

**Bronze**  
8268-7/28

**Titanium**  
8268-8/28

Replacement Cover  
368-21/28M



**NEST 2 SQUARE PANS &  
FILL BOTTOM PAN WITH  
WATER FOR MOIST HEAT**

## Shallow Oval Roaster w/Cover

3.0 qt./ 2.8 L  
17.0"W x 10.5"D x 5.0"H (2.5" without cover)

**White**      **Bronze**      **Titanium**  
8265-2/38    8265-7/38    8265-8/38

Replacement Cover  
365-21/38M



**NEST 2 OVAL PANS & FILL  
BOTTOM PAN WITH WATER  
FOR MOIST HEAT**

## Deep Oval Roaster w/Cover

4.5 qt./ 4.3 L  
17.0"W x 10.5"D x 6.0"H (3.5" without cover)

**Bronze**      **Titanium**  
8270-7/38    8270-8/38

Replacement Cover  
365-21/38M



## Tray

12.5"W x 10.0"D x 1.0"H  
(15.25"W with handles)

**Bronze**  
8260-7/32

**Titanium**  
8260-8/32



**Cover/Utensil Holder**  
9080\*3



Induction | Gas | Electric | Oven



Ideal for serving, durable Primo display cookware is as beautiful as it is functional

- ✓ Rivet mounted, stainless steel, stay cool handle
- ✓ Withstands temperatures up to 500°, oven safe
- ✓ 10-year warranty on handle and rivets

## 5-ply construction with “Spring USA Edge”

- ✓ 18/10 stainless steel outer layers prevent warping and scratching
- ✓ 3-ply aluminum core provides quick and even heat distribution
- ✓ Rolled sealed edges protect the core and make it safe for commercial dishwashers



**Fry Pan**  
**8186-60/20**  
 8” Dia. x 1.38”H

**Fry Pan**  
**8186-60/30**  
 11” Dia. x 2.0”H

**Sauteuse**  
**8166-60/16**  
 1.5 qt. / 1.4 L  
 6” Dia. x 2.75”H

**Sauteuse**  
**8166-60/20**  
 2.0 qt. / 1.9 L  
 7.9” Dia. x 2.63”H

**Fry Pan**  
**8186-60/26**  
 9.5” Dia. x 1.63”H

**Sauteuse**  
**8166-60/18**  
 1.5 qt. / 1.4 L  
 7” Dia. x 2.25”H

**Sauteuse**  
**8166-60/24**  
 4.0 qt. / 3.8 L  
 9.5” Dia. x 3.25”H



# INDUCTION COOKWARE & ACCESSORIES

## Roasting Pan 6 qt. 8165-60

6.0 qt./ 5.7 L  
15.5"W x 12.0"D x 3.0"H  
(17.25"W x 4.75"H w/ handles)



## Roasting Pan 3 qt. 8165-63

3.0 qt./ 2.8 L  
13.0"W x 9.25"D x 2.5"H  
(14.5"W x 4.25"H w/ handles)

## Griddle w/Ribbed Bottom 8168-60/30

2.0 qt./ 1.9 L  
12.0" Dia. x 1.5"H



## Round Saute Pan 1 long, 1 short handle 8170-60/24

2.25 qt./ 2.1 L  
12.0" Dia. x 2.75"H



## Round Saute Pan 8170-60/30

5.0 qt./ 4.7 L  
12.0" Dia. x 2.75"H



9544/1 Porcelain Insert  
for 8170-60/30

9544/2 Porcelain  
Divided Insert for  
8170-60/30

## Oval Saute Pan 1 long, 1 short handle 8181-60/38

1.5 qt./ 1.42 L  
11"W x 10"D x 1.75"H





**Oval Saute Pan**  
**2 short handles**  
**8188-60/38**

1.5 qt./ 1.42 L  
19.0"W x 10.5"D x 1.75"H



**Round Bottom**  
**Wok Pan**  
**8216-60/34**

6.0 qt. / 5.7 L  
13.4" Dia. x 4.0"H

*use with wok range on page 8*



**Gratin Pan- 6"**  
**8456-60/16**

0.25 qt./ 0.24 L  
6.3" Dia. x 0.75"H



**Gratin Pan-12"**  
**8456-60/30**

4.0 qt./ 3.8 L  
12" Dia. x 1.63"H



**Paella Pan**  
**8460-60/40A**

10.0 qt./ 9.5 L  
15.75" Dia. x 3.5"H



**Paella Pan Cover**  
**460-61/40**

**Paella Pan**  
**Porcelain Insert**  
**9545**

3.3 qt./ 3.1 L  
16.63" Dia.



# INDUCTION COOKWARE & ACCESSORIES

## Accessories

- ✓ 18/10 stainless steel
- ✓ Front-of-house appearance with back-of-house durability
- ✓ Dishwasher safe



### Display Fish Poacher M2518

2.5"D x 18"L  
storage cylinders not included

### Display Fish Poacher M4018

4"D x 18"L



## Canisters w/Clear Acrylic Locking Lid



### M8469/20

1.7 qt./ 1.6 L  
5" Dia. x 7.5"H

### M8469/16

1.4 qt./ 1.3 L  
5" Dia. x 6.13"H

### M8469/12

1.0 qt./ 0.9 L  
5" Dia. x 4.75"H

### M8469/09

0.7 qt./ 0.7 L  
5" Dia. x 3.63"H

## Storage Cylinders



### M8429/07

0.8 qt./ 0.8 L  
5" Dia. x 3"H

### M8429/10

1.1 qt./ 1.0 L  
5" Dia. x 4"H

### M8429/13

1.6 qt./ 1.5 L  
5" Dia. x 5.5"H

### M8429/17

2.0 qt./ 1.9 L  
5" Dia. x 6.75"H



### Polished Stainless Steel Menu Holders 321-6\*12

### Brushed Stainless Steel Menu Holders 322-6\*12



### Oval Utensil Rest M3557-28

10"L x 4.5"W x 1.25"H



### Cover & Utensil Rest 9080\*3

7.5"L x 6.25"W x 7.5"H

## Stainless Steel Accessories



- |          |                    |  |
|----------|--------------------|--|
| <b>A</b> | <b>M3505-01*12</b> | Coffee/Condiment<br>Measuring Spoon 2 Tbsp |
| <b>B</b> | <b>M3505-08</b>    | Spoon 9.75"                                |
| <b>C</b> | <b>M3505-09</b>    | Slotted Spoon 9.75"                        |
| <b>D</b> | <b>M3505-13</b>    | Spreader Knife 8.25"                       |
| <b>E</b> | <b>M3505-29</b>    | Ladle 1.5 oz.                              |
| <b>F</b> | <b>M3505-29B</b>   | Bent Handle Ladle 1.5 oz.                  |
| <b>G</b> | <b>M3505-30</b>    | Ladle 4 oz.                                |
| <b>H</b> | <b>M3505-33</b>    | Slotted Turner 13.5"                       |
| <b>I</b> | <b>M3505-35</b>    | Slotted Spoon 13.5"                        |
| <b>J</b> | <b>M3505-36</b>    | Spoon 13"                                  |

## Multi-Purpose Tongs

One piece material holds its shape and is easy to clean



8.5"  
9082.3\*3



10.5"  
9085.5\*3



10.5"  
9385\*3

# BUFFET SYSTEMS



- (K)** M3505-37 Pasta Spoon 12.5"
- (L)** M3505-39 Solid Turner 13.5"
- (M)** M3505-40 Rice Ladle 10"
- (N)** M3505-41 Ladle 3 oz.
- (O)** M3505-42 Salad Fork 12.5"
- (P)** M3505-43 Salad Spoon 12.5"
- (Q)** M3505-69 Pastry Server 11"
- (R)** M3505-76 Bent Handle Soup Tureen Ladle 6 oz.
- (S)** M3505-88 Pizza Cutting Wheel 4"
- (T)** M3505-90 Pizza/Pie Server 14"

## Nylon with Stainless Steel Handles

- Withstands temperatures up to 410°
- Ideal for non-stick surfaces
- Dishwasher safe



Wisk  
K2330

Large  
Spatula  
K2331

Small  
Spatula  
K2332

Spoon  
K2335

## Spadles

Perfect for portion control applications

Spadle 2 oz.  
M8482

Spadle 3 oz.  
M8483

Perforated  
Spadle 4 oz.  
M8484-P

Spadle 4 oz.  
M8484

Spadle 6 oz.  
M8486



BEVERAGE &  
TABLE DISPLAY

Height, Flexibility, ***Drama***

# BEVERAGE & TABLE DISPLAY

## Beverage Dispensers

### Juice

- ✓ Mirror polished 18/10 stainless steel
- ✓ Acrylic canisters are stain resistant
- ✓ Solid cast, stainless steel faucet with removable, easy clean-out valve
- ✓ Separate ice core does not dilute beverage
- ✓ BPA free; NSF certified
- ✓ Skid and scratch proof footing



**4.2 qt Beverage Dispenser  
2511-6/4**

4.2 qt./ 4.0 L  
6.5"W x 10.5"D x 22.0"H



**7.4 qt Beverage Dispenser  
2511-6/7**

7.4 qt./ 7.0 L  
8.0"W x 11.5"D x 25.0"H



**7.4 qt Beverage Dispenser  
w/ Drip Tray  
2525-6/7**

7.4 qt./ 7.0 L  
8.9"W x 13.8"D x 25.0"H



## Coffee

- ✓ 18/10 mirror polished stainless steel
  - ✓ Solid cast stainless steel faucets
  - ✓ Stay cool handles
  - ✓ Skid and scratch proof footing
  - ✓ Option to add electric heating element that keeps coffee at the perfect temperature without burning
- See page 29



**NSF.**

**6 qt. Coffee Urn  
2505-6/6**

6 qt./ 5.7 L  
11.0"W x 10.9"D x 17.1"H



**NSF.**

**12 qt. Coffee Urn  
2505-6/12A**

12 qt./ 11.4 L  
13.2"W x 12.5"D x 19.7"H



**NSF.**

**20 qt. Coffee Urn  
2505-6/20**

5.25 qt./ 5.0 L  
15.4"W x 15.9"D x 22.4"H



**NSF.**

**7 qt.  
Renaissance  
Coffee Urn  
2535-6/6**

7.0 qt./ 6.6 L  
11.0"W x 11.0"D x 18.0"H



**NSF.**

**13 qt.  
Renaissance  
Coffee Urn  
2535-6/12**

13.0 qt./ 12.3 L  
13.0"W x 13.0"D x 21.0"H

## Milk Dispenser

- ✓ 18/10 mirror polished stainless steel
- ✓ Solid cast stainless steel faucets
- ✓ Separate ice core does not dilute beverage



**NSF.**

**5 qt. Milk Dispenser  
2528-6/5**

5.3 qt. / 5.0 L  
8.9"W x 13.8"D x 18.5"H

# BEVERAGE & TABLE DISPLAY

A

## Alpha

- ✓ Double-wall holds hot or cold beverages at temperature for 2 hours
- ✓ Seamless, one piece base
- ✓ Stainless steel liner, no glass
- ✓ Mirror-polished 18/8 stainless steel



<b>17577-6</b>	<b>17578-6</b>	<b>17579-6</b>
16 oz./0.5 L	27 oz./0.8 L	40 oz./1.2 L

Σ

## Sigma

- ✓ Vacuum insulated, double-wall holds hot and cold beverages at temperature for 6 hours
- ✓ Stainless steel liner, no glass
- ✓ Remains sealed until tab is pushed for pouring
- ✓ Available in brushed or polished finish
- ✓ Additional colored tabbed lids available



Brushed



Polished

<b>Brushed</b>	<b>Polished</b>	<b>Brushed</b>	<b>Brushed</b>
<b>18599-5</b>	<b>18600-6</b>	<b>18600-5</b>	<b>18601-5</b>
24 oz./ 0.7 L	34 oz./ 1.0 L	34 oz./ 1.0 L	52 oz./ 1.5 L

## Additional covers for Sigma set of 6



**E598.6\*6**



**E598.7\*6**



**E598.8\*6**



**E598.9\*6**





**Delta**

- ✓ Vacuum insulated, double-wall holds hot and cold beverages at temperature for 6 hours
- ✓ Brushed stainless steel exterior
- ✓ Stainless steel liner, no glass
- ✓ Easy pour lid opens when tilted
- ✓ Elegant and durable
- ✓ Optional etching available

**17598-5**  
14oz./ 0.4 L

**17599-5**  
24 oz./ 0.7 L

**17600-5**  
34 oz./ 1.0 L

**17601-5**  
52 oz./ 1.5 L



**Omega**

- ✓ Vacuum insulated, double-wall holds hot and cold beverages at temperature for 6 hours
- ✓ Durable brushed stainless steel liner, no glass
- ✓ Remains sealed until tab is pushed for pouring

**19599-5**   **19600-5**   **19601-5**   **19602-5**  
20 oz./ 0.6 L   34 oz./ 1.0 L   52 oz./ 1.5 L   68 oz./ 2.0 L

**Additional covers for Omega set of 6**



**E600-9\*6**



**E601-9\*6**



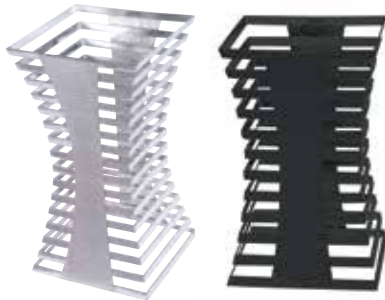
# BEVERAGE & TABLE DISPLAY

## XCESSories Towers

Bring your buffet to the next level! Interchangeable display pieces add height and drama to any presentation.

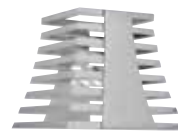
- ✓ Mix and match glass shelves and accessories with various Tower heights for countless display options
- ✓ Metal Towers are solid 18/8 stainless steel, with strong, durable welds
- ✓ 10-year warranty on welds

**Stainless Steel  
XC1121**  
10.0"W x 9.88"D x 18.5"H



**Titanium  
XC1121-8**

**Stainless Steel  
XC1123**  
10.0"W x 10.0"D x 9.0"H



**Titanium  
XC1123-8**

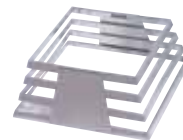


**Stainless Steel  
XC1122**  
8.25"W x 8.25"D x 13.75"H



**Titanium  
XC1122-8**

**Stainless Steel  
XC1124**  
10.0"W x 10.0"D x 4.34"H



## **NEW!** Fuel Holder for Towers

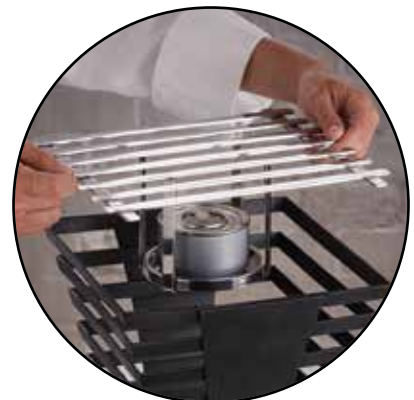
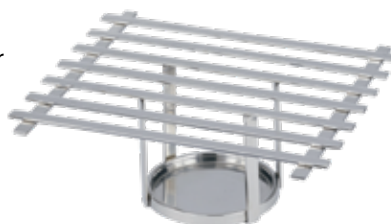
- ✓ For power-limited situations
- ✓ Heavy duty construction
- ✓ For all Tower sizes, except wood

**XC1121-A**  
Fits 18.5" Tower

**XC1122-A**  
Fits 13.75" Tower

**XC1123-A**  
Fits 9" Tower

**XC1124-A**  
Fits 4.34" Tower



**Wood  
XC2850**

11.0"W x 11.0"D x 19.8"H



**Wood  
XC2830**

11.0"W x 11.0"D x 11.75"H



**Wood Cold Display  
XC2201**

22.75"W x 15.0"D x 9.75"H

**Cold Packs Inserts  
XC201**



**Glass Stairs  
XC1130**

13.38"W x 10.5"D x 5.0"H

**Glass Shelves**

**XC4242**

16.63"W x 16.63"D

**XC1054**

21.5"W x 13.5"D

**XC6042**

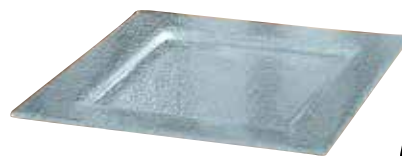
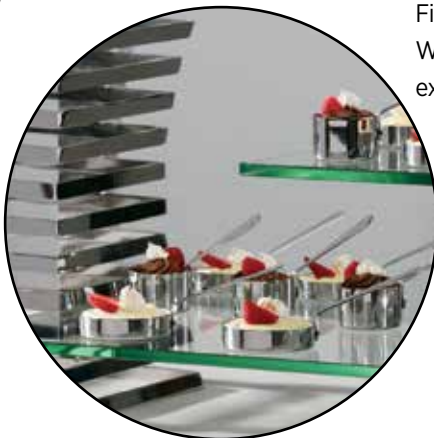
23.63"W x 13.75"D

**XC2575**

29.5"W x 9.75"D

**XC8042**

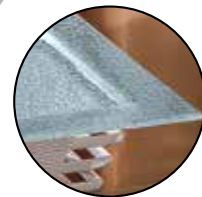
31.63"W x 16.5"D



**Square Glass Plate  
XC137-2\*3**

12.0"W x 13.63"D

Fits all Stainless and  
Wood Towers  
except 1122 and 1124



Fits in top of Towers



**Curved Glass Shelf  
XC6536**

25.6"W x 14.4"D

# BEVERAGE/TABLE DISPLAY

## XCESSories Table Display

Add additional interest and dimension to your buffet! Hammered finished pieces are made with 18/8 stainless steel. 10-year warranty on welds.

### Medium Wheel XC3254

25.0"W x 6.63"D x 24.0"H

### Additional Medium Trays XC3254T\*3

### Large Wheel XC3255

30.25"W x 7.63"D x 29.13"H

### Additional Large Trays XC3255T\*3



## Hammered Bowls

Double wall insulation keeps food hot and cold longer. Made with mirror-polished 18/8 stainless steel.



**XC2261/36**  
14" Dia.

**XC2261/40**  
16" Dia.

**XC2261/46**  
18" Dia.

### Hammered Straight Staircase 8" High XC3322S

17.0"W x 22.0"D  
x 8.0"H



## Risers (Set of 3)

6"W x 6"D x 4"H

7"W x 7"D x 6"H

8"W x 8"D x 8"H

### Hammered Stainless Steel XC3198\*3



## Titanium **NEW!** XC3200\*3

Smooth, matte, non-stick finish

Fingerprint & scratch resistant



# Micro XCESSories

Delight guests and showcase creativity by serving food with unique Micro Xcessories! Real copper and stainless steel pieces have a 10-year warranty on handles, rivets and welds.



<b>A</b>	6456-60/11*4	Mini Wok, (Set of 4)	6.0"W x 4.13"D x 1.38"H
<b>B</b>	6410-60/9*4	Elevated Dish, (Set of 4)	3.75"W x 3.75"D x 2.63"H
<b>B1</b>	478-2/8*12	Glass Cloche (only), (Set of 12)	3.0"W x 3.0"D x 2.63"H
<b>C</b>	6468-60/9.3*12	Square Tray, (Set of 12)	3.5"W x 3.5"D x 0.25"H
<b>D</b>	6460-70/5*4	AuJus Pan, (Set of 4)	5.13"W x 2.0"D x 3.0"H
<b>E</b>	6480-70/7*4	Straight Fry Pan, (Set of 4)	2.88"W x 2.88"D x 2.13"H
<b>F</b>	6490-70/9*4	Angled Fry Pan, (Set of 4)	7.13"W x 3.75"D x 1.25"H
<b>G</b>	6478-70/10*4	Curved Fry Pan, (Set of 4)	7.88"W x 4.0"D x 1.1"H
<b>H</b>	6478-60/10*4	Curved Fry Pan, (Set of 4)	7.88"W x 4.0"D x 1.1"H
<b>I</b>	6490-60/9*4	Angled Fry Pan, (Set of 4)	7.13"W x 3.75"D x 1.25"H
<b>J</b>	6480-60/7*4	Straight Fry Pan, (Set of 4)	2.88"W x 2.88"D x 2.13"H
<b>K</b>	6460-60/5*4	AuJus Pan, (Set of 4)	5.13"W x 2.0"D x 3.0"H





corner  stone

Foodservice Group

**Worldwide.  
Innovative.  
Industry Solutions.**

Cornerstone Foodservice Group is a family of leading & groundbreaking brands trusted by industry professionals worldwide for providing innovation, high quality products & creative business solutions.

### About Spring USA®

Spring USA is a food service industry leader, first to introduce countertop induction to the United States. Known for the innovation and design of reliable, durable and beautiful products, Spring USA specializes in induction cooking & warming equipment, buffetware, mobile cooking stations, and custom-built tables with hidden induction and cooling elements. Spring USA is chosen by industry professionals worldwide for its performance and quality.

The logo for Spring USA features the word "Spring" in a large, white, sans-serif font with a registered trademark symbol. Below it, "USA" is written in a smaller, white, sans-serif font. The entire logo is set against a dark grey background.

THE EVOLUTION OF INTELLIGENT DESIGN

WORLDWIDE

The logo for LloydPans features the word "LLOYD" in a large, white, sans-serif font. Below it, "Pans" is written in a smaller, white, sans-serif font. A stylized orange pizza pan is positioned above the letter "O" in "Pans". Below the main text, "LLOYD INDUSTRIES" is written in a smaller, orange, sans-serif font. The entire logo is set against a dark grey background.

### About LloydPans®/ Lloyd Industries, LLC

LloydPans is an industry leading manufacturer of commercial grade baking, pizza, and restaurant equipment made in the USA. The company designs and manufactures commercial pizza pans and pizza tools, commercial bakeware, and commercial and consumer restaurant equipment in its 80,000-square foot facility in Spokane Valley, WA. LloydPans distributes its products around the world through multiple sales channels.

INNOVATIVE

### About Astra Manufacturing, Inc.

Since 1993, Astra has produced premium, professional espresso machines, steamers, grinders and accessories with the goal to exceed customer expectations every time. Designed with aerospace engineering and manufactured within the USA, these reliable and efficient machines provide gourmet coffee selections to a wide range of commercial and residential consumers.

The logo for Astra Manufacturing features the word "ASTRA" in a large, white, sans-serif font. The letters are flanked by horizontal lines on both sides, creating a stylized, industrial look. The entire logo is set against a dark grey background.

INDUSTRY SOLUTIONS



# DAISY CHAIN 5 UNITS IN ONE 15 AMP CIRCUIT

THE UNLIMITED INDUCTION RANGE

**See Page 5**



EDGE to EDGE



- Heats any pan configuration
- Power receptacle in back of unit
- Only 2.5 amps
- Removable controls; Use on countertop or built-in

**Spring**<sup>®</sup>  
USA

Corporate Headquarters  
127 Ambassador Drive  
Suite 147  
Naperville, IL 60540  
800.535.8974  
Fax: 630.527.8677  
E-mail: [springusa@springusa.com](mailto:springusa@springusa.com)